



Feature

- IP40
- Thermally engineered heatsink producing much cooler operating temperatures
- Easy to install with two spring clips
- Stylish and aesthetically pleasing design
- High grade diffuser provides uniform light
- Glareless reflector creates visual comfort, cut-off angle 25°
- 3 Year Warranty

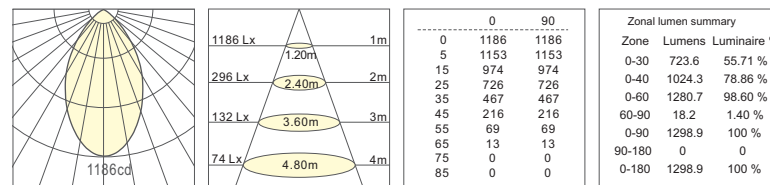
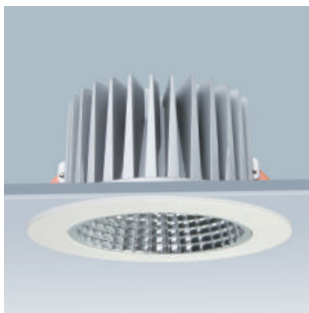
E4R SPECIFICATION



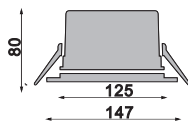
E4R-10C Downlight outperforms 26W CFL downlight

1300 Lm ~ 1400 Lm MODELS

Product Code	Downlight output	LED Power	System Power	CRI	CCT	LED Brand
LED-EVO-E4R-10C-3K	1300 lm	15 W	18 W	83	3000K	SAMSUNG
LED-EVO-E4R-10C-4K	1400 lm	15 W	18 W	83	4000K	SAMSUNG



Housing: Die-cast aluminium, powder coated  
 Diffuser: High grade PMMA  
 Reflector: High reflective mirror-finish  
 Weight: 690g



LED Driver :

External Driver (CE/ CB certificated)  
 Mains Dim / 0-10V / DALI options

Temperature

- Ambient operating temperature:
  - 20° C~+40° C
- Storage temperature:
  - 30° C~+60° C

